

Soil Data Viewer and You

The Soil Data Viewer will create interpretive and thematic soil maps and reports to help make land use decisions easier.

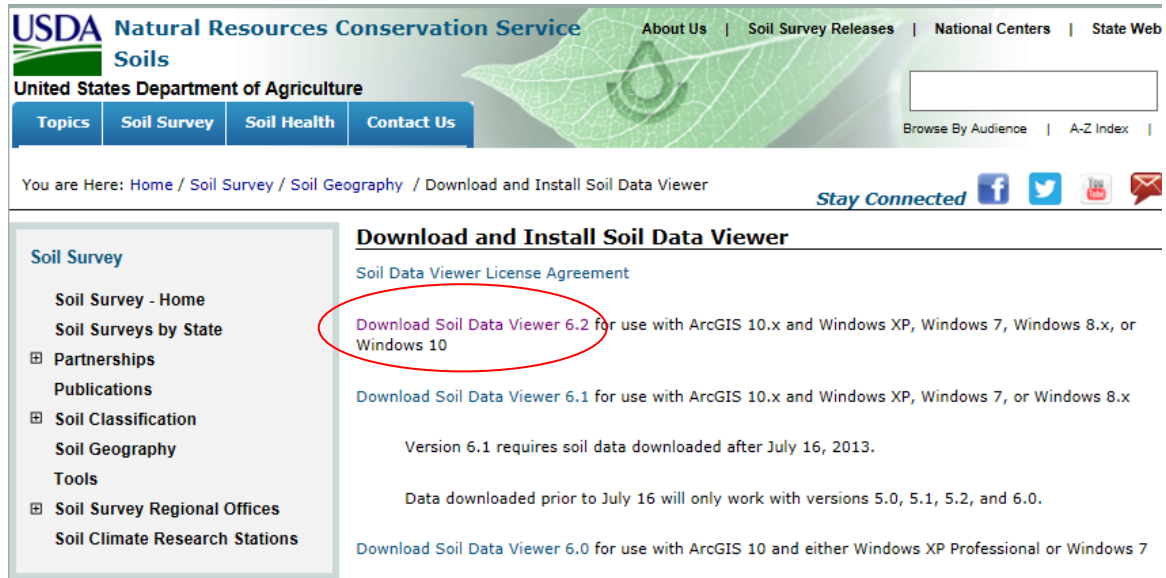
The Soil Data Viewer is an extension tool for ArcGIS.

These instructions is for those who have gotten their soils data from the web and wish to use the Soil Data Viewer with the Soils map in ArcGIS.

Here's the only hard part:

The Soil Data Viewer is a free download located at:

https://www.nrcs.usda.gov/wps/portal/nrcs/detail/soils/survey/geo/?cid=nrcs142p2_053614



USDA Natural Resources Conservation Service
Soils
United States Department of Agriculture

Topics | Soil Survey | Soil Health | Contact Us

About Us | Soil Survey Releases | National Centers | State Web

Browse By Audience | A-Z Index

You are Here: Home / Soil Survey / Soil Geography / Download and Install Soil Data Viewer

Stay Connected

Download and Install Soil Data Viewer

Soil Data Viewer License Agreement

Download Soil Data Viewer 6.2 for use with ArcGIS 10.x and Windows XP, Windows 7, Windows 8.x, or Windows 10

Download Soil Data Viewer 6.1 for use with ArcGIS 10.x and Windows XP, Windows 7, or Windows 8.x

Version 6.1 requires soil data downloaded after July 16, 2013.

Data downloaded prior to July 16 will only work with versions 5.0, 5.1, 5.2, and 6.0.

Download Soil Data Viewer 6.0 for use with ArcGIS 10 and either Windows XP Professional or Windows 7

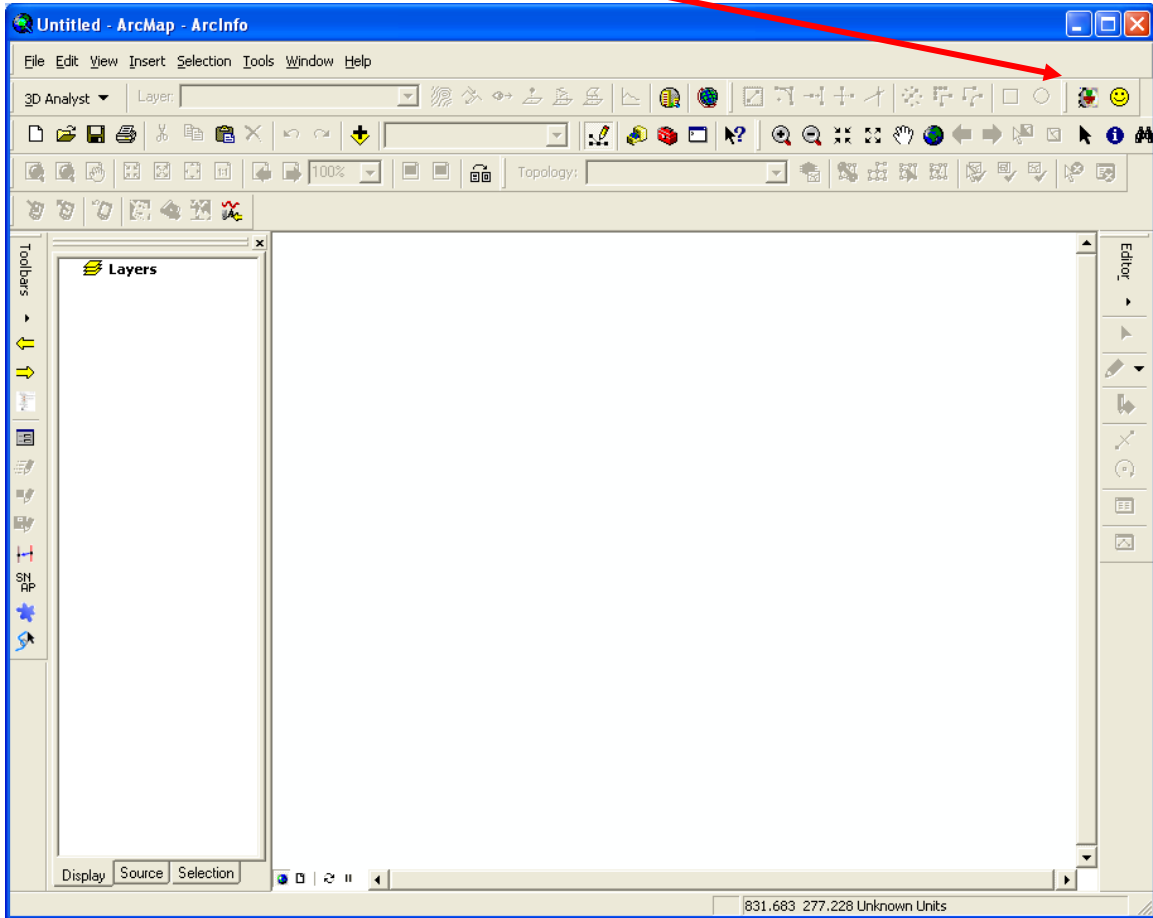
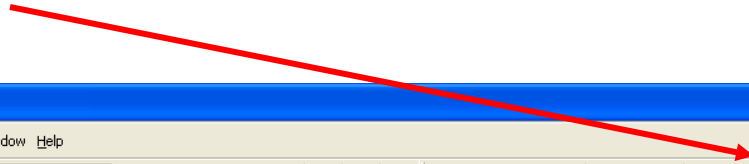
Follow the install instructions.

There are different versions, so load only the one that is compatible with your version of ArcGIS.

And the more intensive user guide is available at:

https://www.nrcs.usda.gov/wps/portal/nrcs/detail/soils/survey/geo/?cid=nrcs142p2_053621

Depending on the Version you are using.

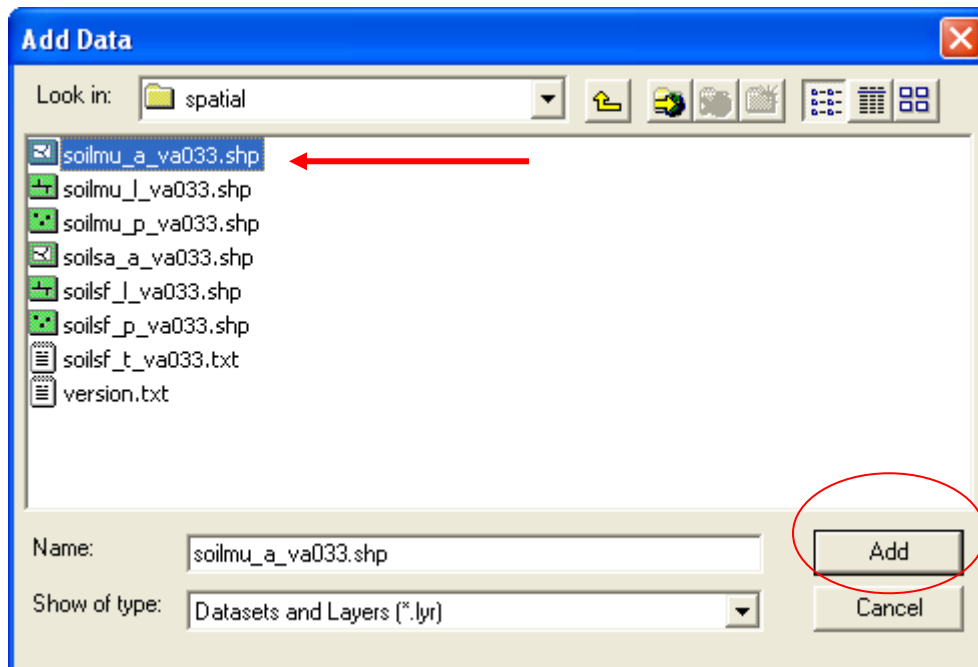
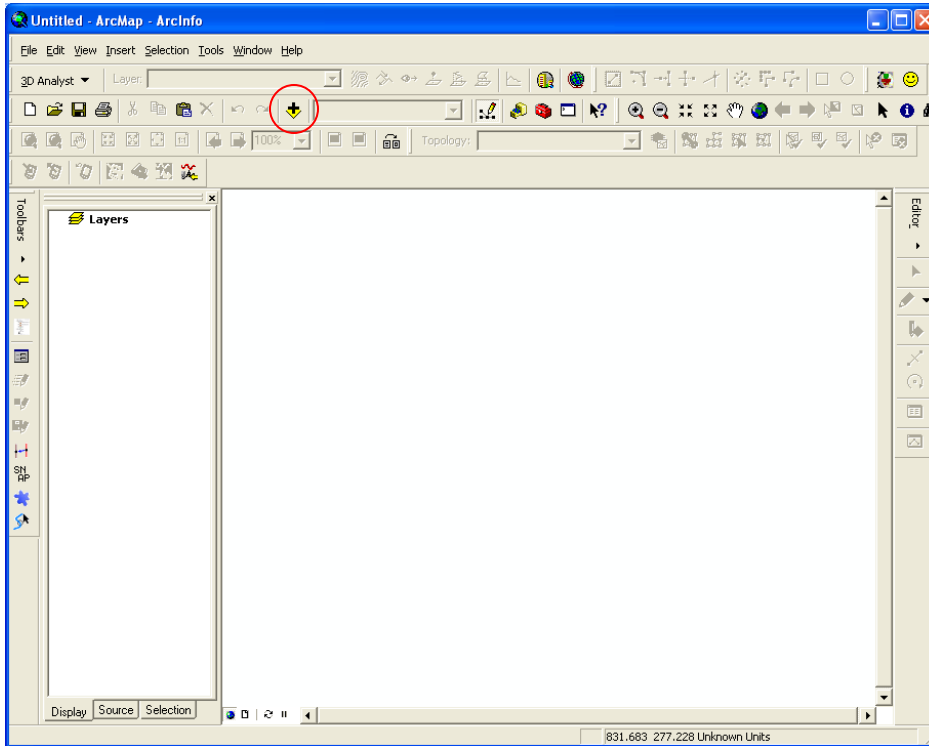


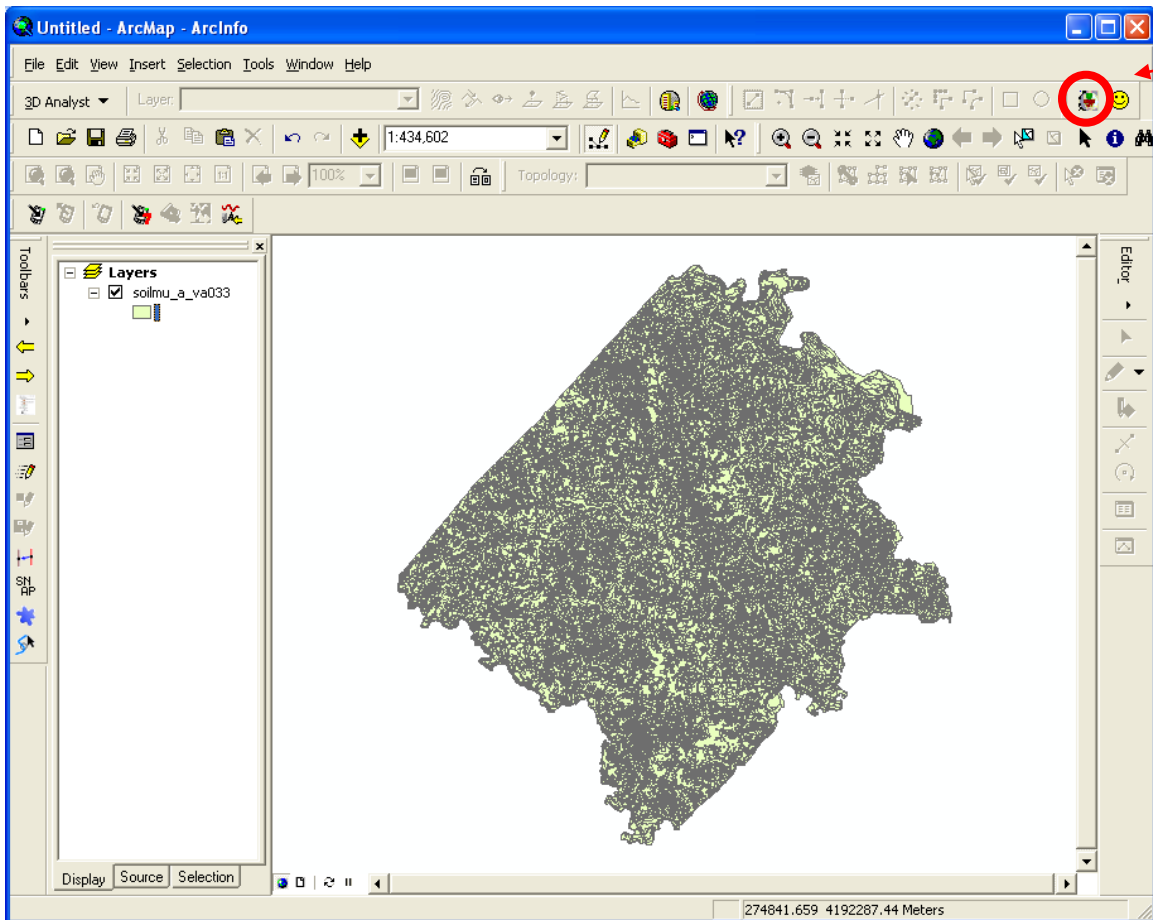
First time users of the Soil Data Viewer must make the button visible. While ArcGIS is open, click on View, click on Toolbars, then if Soil Data Viewer is installed, click on the choice “Soil Data Viewer Tools”

A button should appear, place the button on your tools area.

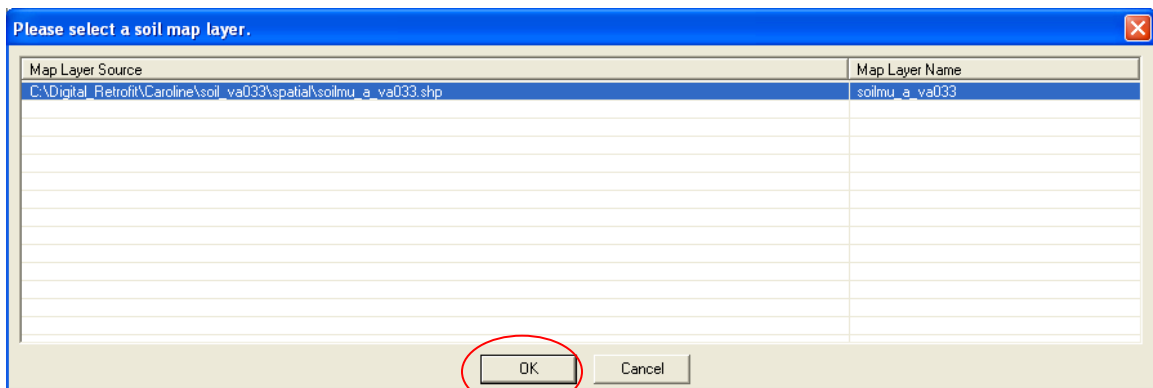
Do not click on it yet. Soils layer has to come first.

Add the soils layer from the spatial folder prior to opening the Soil Data Viewer.
The soils go first.

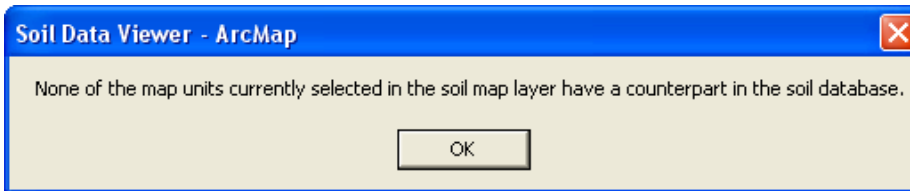




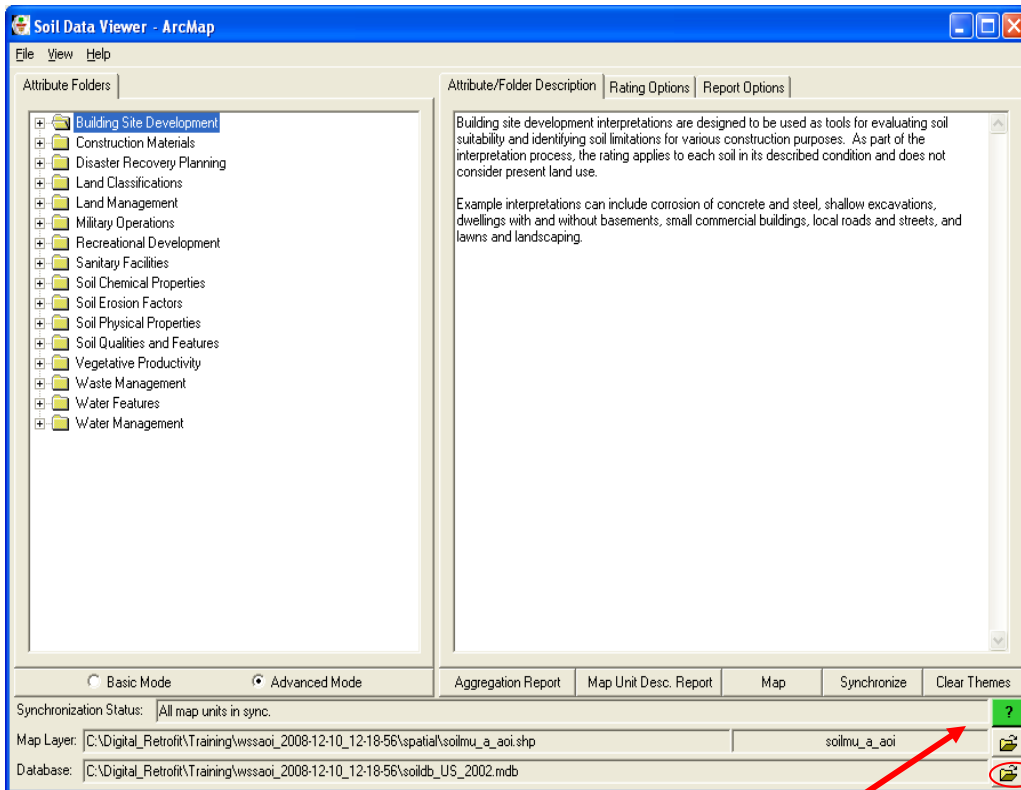
Now click on the Soil Data Viewer (SDV) Button. First timers will have to browse to the Database created from Section one of the tabular data run through the template.



This screen will appear. The first time you use SDV, it may ask you to browse to the folder you have the spatial (map) file. Then click OK. If you have more than one soils map, there may be more than one choice. Choose the one you want to work with.



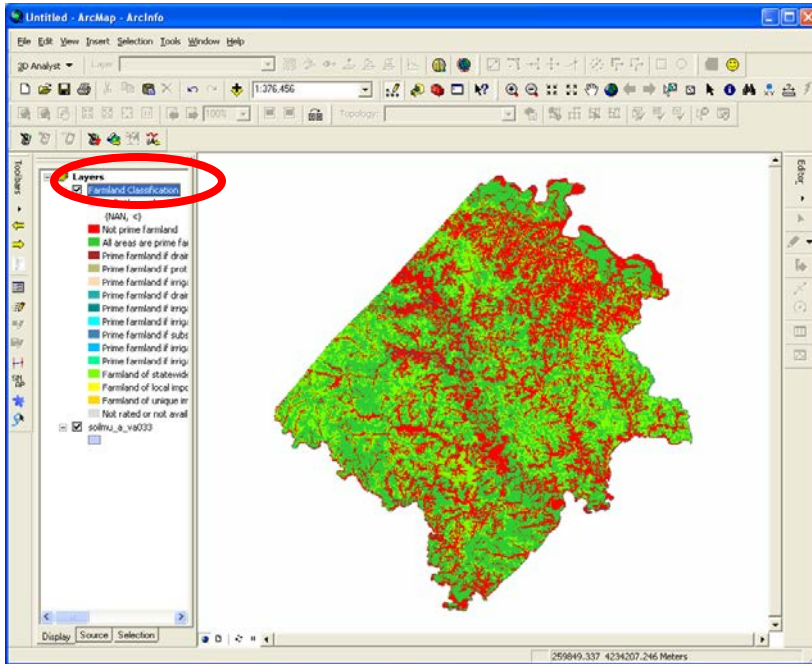
If you have used the SDV in the past with a different county, this message may pop up. Just click OK



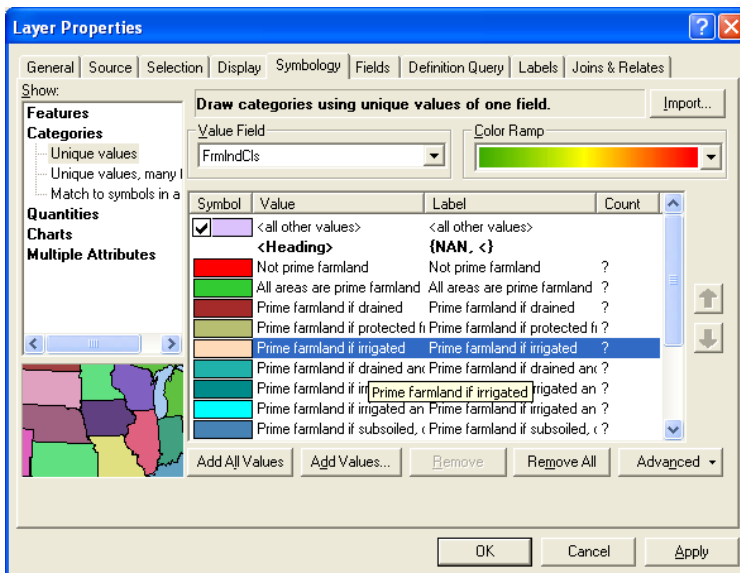
If the ? is **RED**, then the spatial layer and tabular database are not synchronized, or they do not match each other. Use the browse buttons to find the correct Database that matches the map.

A **GREEN** ? means the map and database is synchronized, which is a good thing.

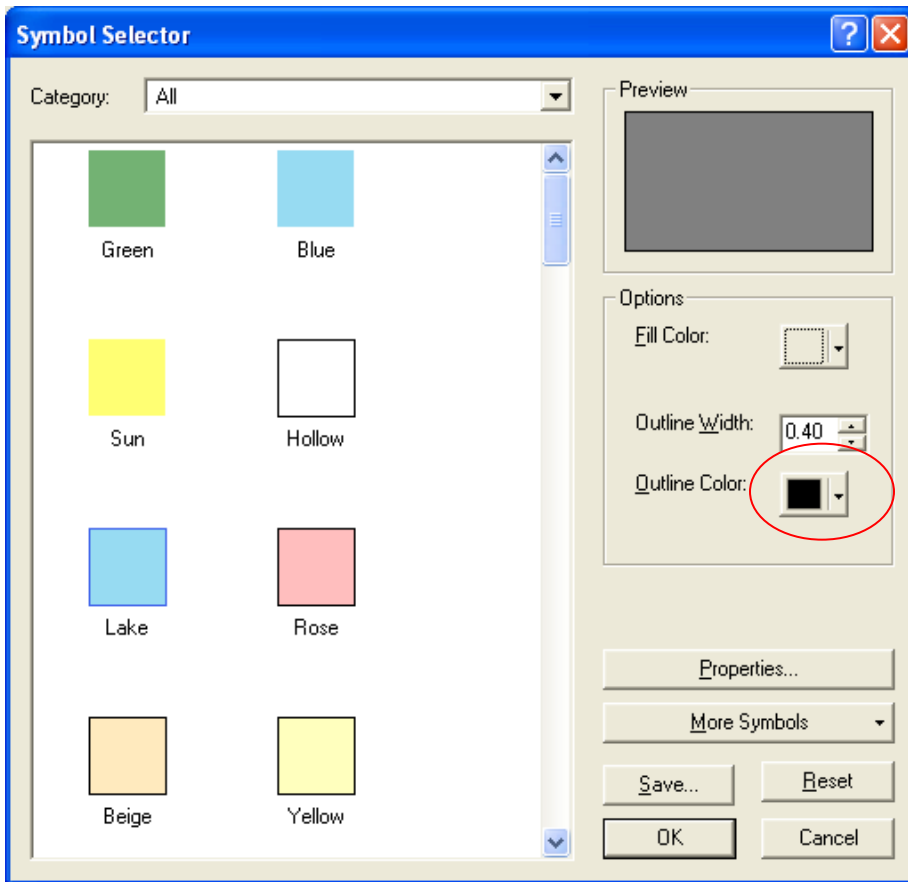
The map may look cluttered with the lines of the map units. When the lines are removed, it looks better.



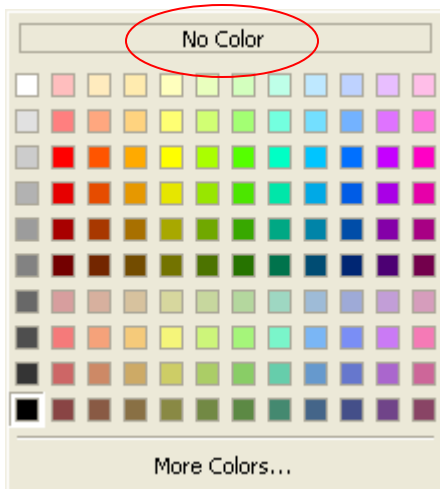
To accomplish this, right click on the Farmland Classification layer, and choose Properties



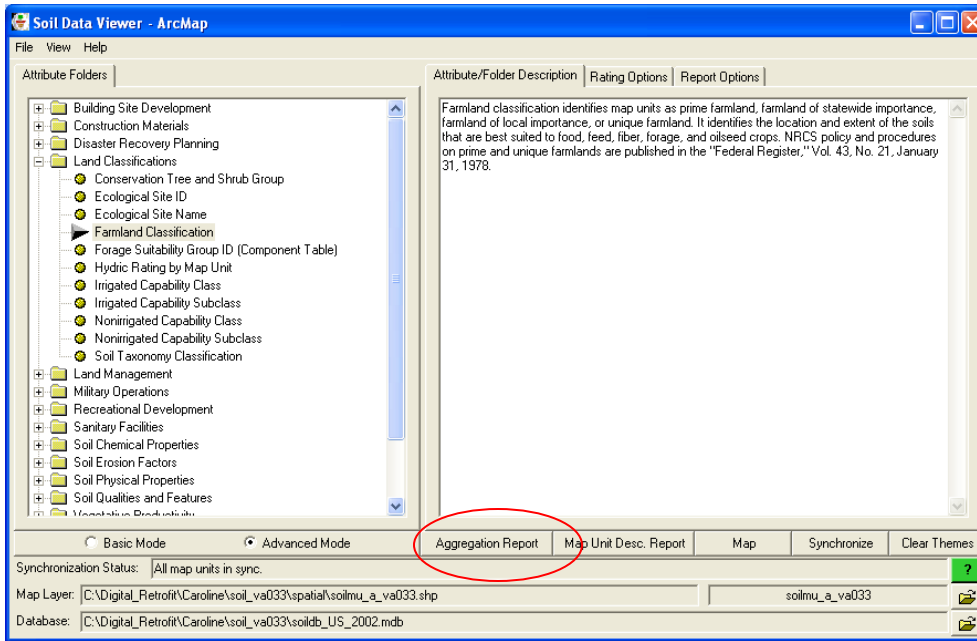
Choose the Symbology tab, and right click on one of the labels. Choose “Properties for all symbols...”



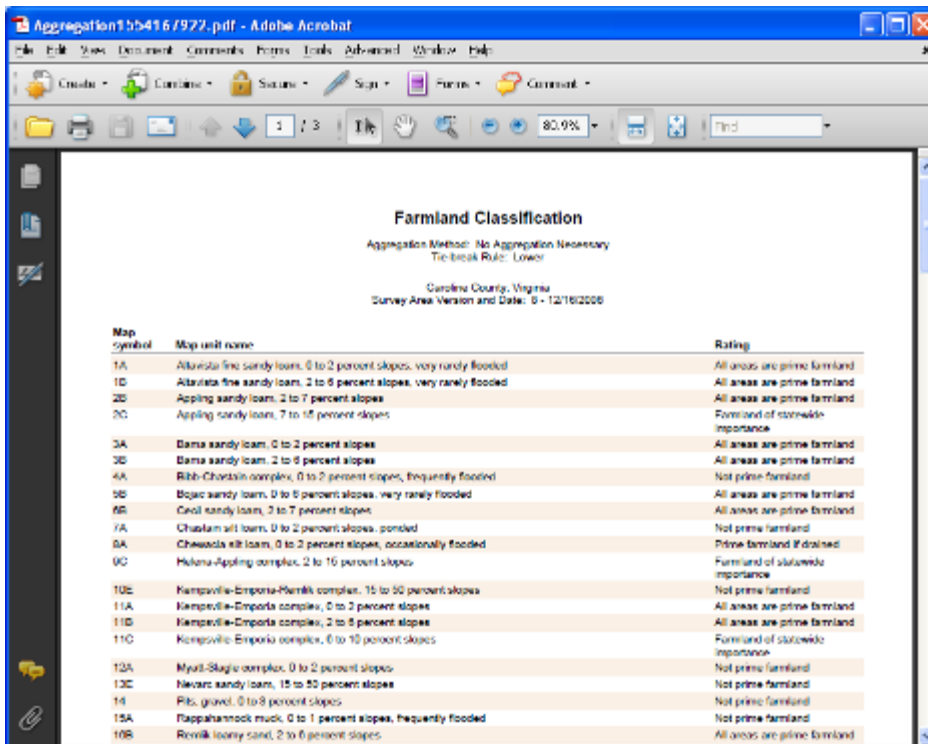
Click on the outline color,



And choose No Color, click OK, and then OK again

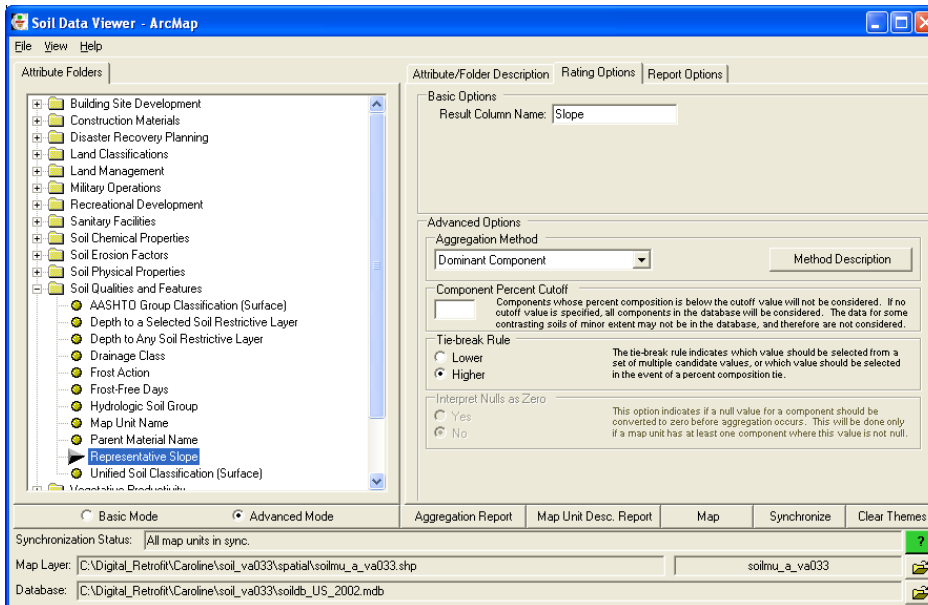
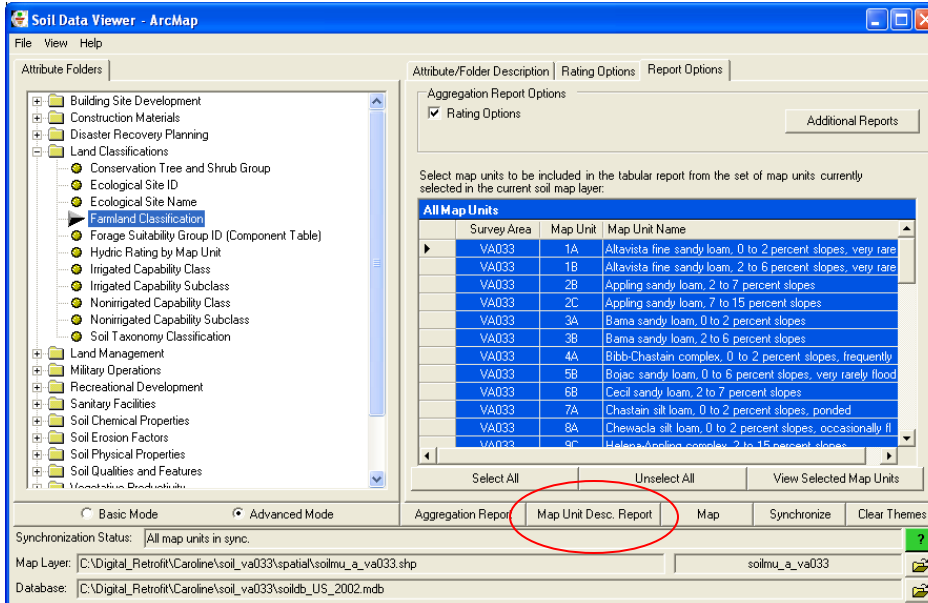


If you need a report of the map created, click on Aggregation Report



And a PDF that you can save, send and/or print appears. It also has a description of what the report has in it. This will work with any of the maps you create. The Map Unit Desc. Report button will give you the Non Technical Soils descriptions of the soils in PDF format also.

Click on Map Unit Desc. Report button for a Non-Technical soil descriptions.



There are many different types of interpretive and thematic information that can be created with the Soil Data Viewer. One must spend the time to try many of the different maps to see what may help them with land use decisions.

If you have AASHTO Group specific soils questions, have trouble using this program, or would like to combine information found in the Soil Data Viewer together, please do not hesitate to call your Resource Soil Scientist or David Harper at 804-287-1647.

More in depth directions for SDV are located at:

https://www.nrcs.usda.gov/wps/portal/nrcs/detail/soils/survey/geo/?cid=nrcs142p2_0536